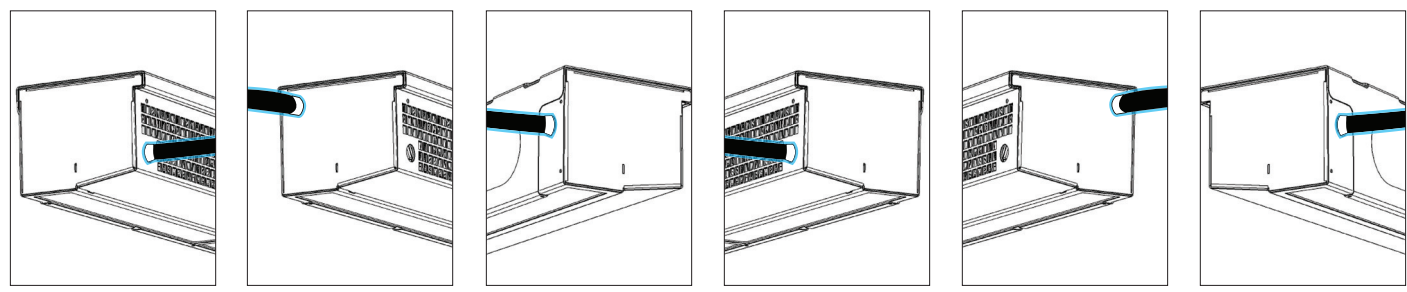




## Type overview BlueSeal Original

Length	Model	Mounting bracket	Cable position		Voltage	Cable specs.	
Length of air curtain (mm)	O = Original	R = Regular E = Enclosed S = Stainless Steel	L = Left R = Right	F = Front S = Side B = Back	12V or 24V	Cable length (m)	Cable thickness in mm <sup>2</sup> N = Normal = 2.5mm <sup>2</sup> T = Thick = 4mm <sup>2</sup> F = Flat = 2.5mm <sup>2</sup>
Example type indication of 2430mm BlueSeal Original air curtain, with Regular mounting bracket, with power cable positioned on Right, Back side, 24V, 5 metre long, Normal cable thickness							
2430-*	O-	R-	R	B-	24-	5	N

### Cable positions



Left Front (LF) O-[.]-LF-[...]  
 Left Side (LS) O-[.]-LS-[...]  
 Left Back (LB) O-[.]-LB-[...]  
 Right Front (RF) O-[.]-RF-[...]  
 Right Side (RS) O-[.]-RS-[...]  
 Right Back (RB) O-[.]-RB-[...]

\* BlueSeal air curtains can be tailored to size depending on the measurements of your vehicle, with a maximum length of 2,430mm.

